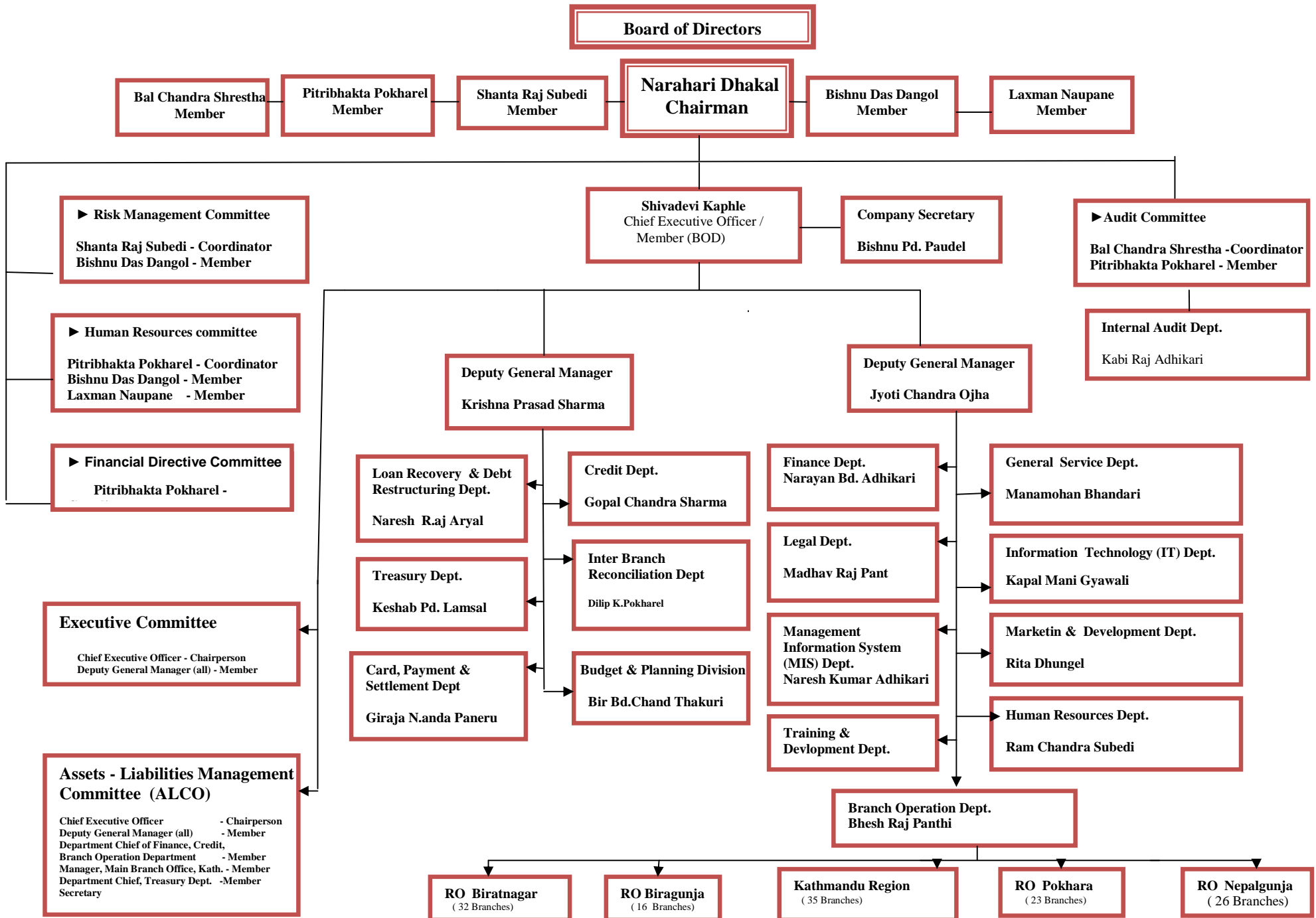


Rastriya Banijya Bank (RBB) Ltd.
Organization Structure



Board of Directors

Bal Chandra Shrestha
Member

Pitribhakta Pokharel
Member

Shanta Raj Subedi
Member

Narahari Dhakal
Chairman

Bishnu Das Dangol
Member

Laxman Naupane
Member

Shivadevi Kaple
Chief Executive Officer /
Member (BOD)

Company Secretary
Bishnu Pd. Paudel

▶ **Audit Committee**
Bal Chandra Shrestha - Coordinator
Pitribhakta Pokharel - Member

▶ **Risk Management Committee**
Shanta Raj Subedi - Coordinator
Bishnu Das Dangol - Member

▶ **Human Resources committee**
Pitribhakta Pokharel - Coordinator
Bishnu Das Dangol - Member
Laxman Naupane - Member

▶ **Financial Directive Committee**
Pitribhakta Pokharel -

Executive Committee
Chief Executive Officer - Chairperson
Deputy General Manager (all) - Member

**Assets - Liabilities Management
Committee (ALCO)**
Chief Executive Officer - Chairperson
Deputy General Manager (all) - Member
Department Chief of Finance, Credit,
Branch Operation Department - Member
Manager, Main Branch Office, Kath. - Member
Department Chief, Treasury Dept. - Member
Secretary

Deputy General Manager
Krishna Prasad Sharma

Deputy General Manager
Jyoti Chandra Ojha

Internal Audit Dept.
Kabi Raj Adhikari

**Loan Recovery & Debt
Restructuring Dept.**
Naresh R.aj Aryal

Treasury Dept.
Keshab Pd. Lamsal

**Card, Payment &
Settlement Dept**
Giraja N.anda Paneru

Credit Dept.
Gopal Chandra Sharma

**Inter Branch
Reconciliation Dept**
Dilip K. Pokharel

**Budget & Planning
Division**
Bir Bd.Chand Thakuri

Finance Dept.
Narayan Bd. Adhikari

Legal Dept.
Madhav Raj Pant

**Management
Information System
(MIS) Dept.**
Naresh Kumar Adhikari

**Training &
Development Dept.**

General Service Dept.
Manamohan Bhandari

Information Technology (IT) Dept.
Kapal Mani Gyawali

Marketin & Development Dept.
Rita Dhungel

Human Resources Dept.
Ram Chandra Subedi

Branch Operation Dept.
Bhesh Raj Panthi

RO Biratnagar
(32 Branches)

RO Biragunja
(16 Branches)

Kathmandu Region
(35 Branches)

RO Pokhara
(23 Branches)

RO Nepalgunja
(26 Branches)